



Traffic Safety Unit 2011

January 1 - December 31, 2011



Pedestrian

Collision Summary

Leaflet December 2011

This leaflet presents an analysis of pedestrian collisions to Dec. 31, 2011 showing relevant facts and trends.

This leaflet includes reportable collisions involving pedestrians with motorized vehicles in the City of Toronto.

Fatal Collision: A death that has occurred within 366 days of the collision.

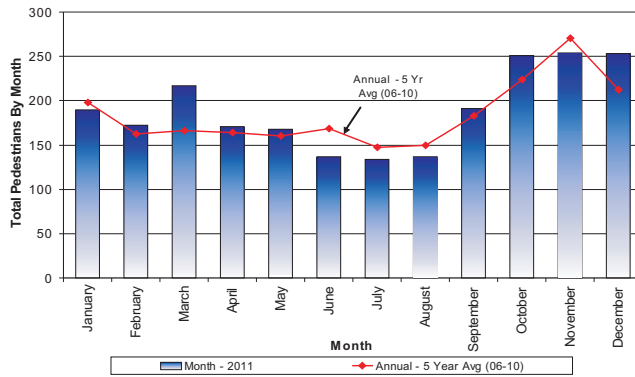


Transportation Services
Traffic Management Centre
Traffic Safety Unit

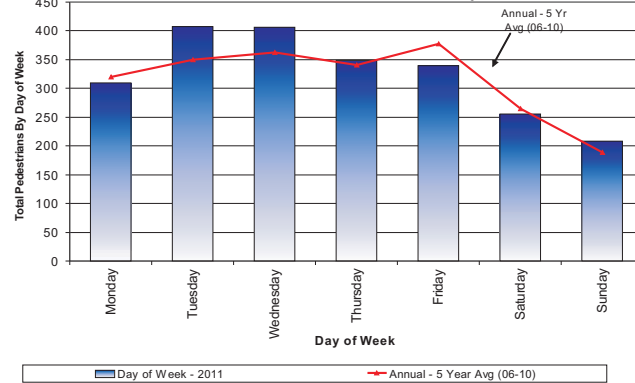
Pedestrian Collisions - History

Year	Injured	Not Injured	Fatal	Total
2006	2,221	105	30	2,356
2007	2,125	104	23	2,252
2008	1,920	107	27	2,054
2009	2,069	100	31	2,200
2010	2,050	91	20	2,161
2011	2,174	83	18	2,275
Total	11,827	556	145	12,528

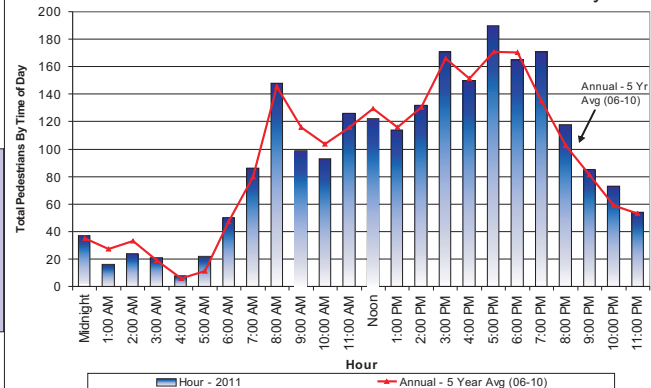
Pedestrians Involved in Collisions - Month



Pedestrians Involved in Collisions - Day of Week



Pedestrians Involved in Collisions - Time of Day



Pedestrians Involved in Collisions - Pedestrian Condition

Pedestrian Condition	2011				Annual 5 Yr Avg (06-10)
	No Injury	Injured	Fatal	Total	
Normal	55	1,534	6	1,595	1,635
Inattentive	9	291	3	303	493
Unknown	14	150	8	172	27
Had been drinking	1	75	1	77	15
Blank	2	56	0	58	18
Medical or physical disability	1	28	0	29	7
Ability impaired, alcohol	0	18	0	18	8
Other	0	14	0	14	7
Ability impaired, alcohol (over .08)	0	4	0	4	8
Ability impaired, drugs	0	4	0	4	0
Fatigue	1	0	0	1	0
Total	83	2,174	18	2,275	2,205

Pedestrians Involved in Collisions - Pedestrian Age Group by Road Class

Age Group	2011						Grand Total
	Collector	Expressway	Local	Major Arterial	Minor Arterial	Private Property	
Unknown or Blank	6	2	4	54	15	5	86
0-4 yrs	3	0	5	19	5	12	44
5-14 yrs	21	1	24	65	32	13	156
15-19 yrs	18	0	12	121	30	11	192
20-24 yrs	18	1	17	142	35	26	239
25-34 yrs	21	1	24	258	37	39	380
35-44 yrs	19	1	22	173	29	44	288
45-54 yrs	19	1	24	175	44	37	300
55-64 yrs	23	2	23	163	41	41	293
65+ yrs	15	0	21	163	43	55	297
Total	163	9	176	1,333	311	283	2,275

Pedestrians Involved in Collisions - Pedestrian Age Group by Injury

Age Group	2011				Annual 5 Yr Avg (06-10)
	No Injury	Injured	Fatal	Total	
0-4 yrs	13	31	0	44	42
5-14 yrs	5	150	1	156	167
15-19 yrs	6	186	0	192	183
20-24 yrs	6	232	1	239	238
25-34 yrs	15	363	2	380	364
35-44 yrs	14	274	0	288	314
45-54 yrs	4	294	2	300	305
55-64 yrs	4	285	4	293	217
65+ yrs	3	288	7	298	296
Unknown or Blank	13	71	1	85	77
Total	83	2,174	18	2,275	2,205

Pedestrians Involved in Collisions - Road Surface Condition

Road Surface Condition	2011				Annual 5 Yr Avg
	No Injury	Injured	Fatal	Total	
Dry	64	1,512	12	1,588	1,635
Wet	14	582	4	600	493
Loose Snow	2	37	0	39	27
Slush	1	13	1	15	15
Other, Unknown or Blank	1	13	1	15	18
Ice	1	8	0	9	7
Packed Snow	0	7	0	7	8
Loose Gravel	0	2	0	2	0
Mud	0	0	0	0	0
Spilled Liquid	0	0	0	0	0
Total	83	2,174	18	2,275	2,205

Pedestrians Involved in Collisions - Traffic Control Type

Traffic Control Type	2011				Annual 5 Yr Avg (06-10)
	No Injury	Injured	Fatal	Total	
Traffic Signal	34	982	5	1,021	922
No Control	43	929	12	984	995
Stop Sign	3	205	1	209	209
Ped Crossover	2	40	0	42	51
Streetcar - Stop	0	4	0	4	5
Traffic Controller	0	4	0	4	7
Police Control	0	3	0	3	6
School Bus	0	3	0	3	1
Other, Unknown, or Blank	0	2	0	2	2
Traffic Gate	1	1	0	2	1
Yield Sign	0	1	0	1	3
School Guard	0	0	0	0	2
Total	83	2,174	18	2,275	2,205

Pedestrians Involved in Collisions - Severity of Injury

Injury Type	2011	Annual 5 Yr Avg (06-10)
Minor	1,153	1,023
Minimal	828	865
Major	193	189
No Injury	83	101
Fatal	18	26
Total	2,275	2,205

Pedestrians Involved in Collisions - Traffic Control Type by Number of Times Driver Charged

Type of Control	Number of Times Driver Charged
Traffic Signal	558
No Control	216
Stop Sign	109
Ped Crossover	30
Streetcar-Stop	2
Police Control	2
School Bus	2
Yield Sign	1
Traffic Controller	1
School Guard	0
Traffic Gate	0
Total	921

The collision information presented in this leaflet was summarized from Motor Vehicle Collision Reports obtained from the Toronto Police Service.

Pedestrians Involved in Collisions - Driver Action

Driver Action	2011				Annual 5 Yr Avg (06-10)
	No Injury	Injured	Fatal	Total	
Failed to yield right-of-way	24	890	5	919	959
Driving Properly	31	546	9	586	695
Other, Unknown or Blank	20	458	2	480	269
Improper turn	1	113	0	114	105
Disobey traffic control	3	76	0	79	56
Lost control	2	45	1	48	61
Speed too fast for condition	1	15	0	16	18
Improper passing	0	13	0	13	17
Exceeding speed limit	0	8	1	9	10
Following too close	0	5	0	5	7
Improper lane change	0	4	0	4	5
Speed too slow	0	1	0	1	0
Wrong way on one-way road	1	0	0	1	4
Total	83	2,174	18	2,275	2,205

Pedestrians Involved in Collisions - Driver Condition

Driver Condition	2011				Annual 5 Yr Avg (06-10)
	No Injury	Injured	Fatal	Total	
Normal	46	1,176	12	1,234	1,337
Inattentive	14	540	3	557	437
Unknown	20	347	2	369	321
Blank	2	60	0	62	60
Other	0	17	0	17	12
Had been drinking	0	12	0	12	13
Ability impaired, alcohol (over 0.08)	0	10	0	10	10
Medical or physical disability	0	6	1	7	5
Fatigue	0	3	0	3	2
Ability impaired, alcohol	0	2	0	2	6
Ability impaired, drugs	1	1	0	2	1
Total	83	2,174	18	2,275	2,205

Pedestrian Collision Rate - Toronto compared to other Canadian Cities*

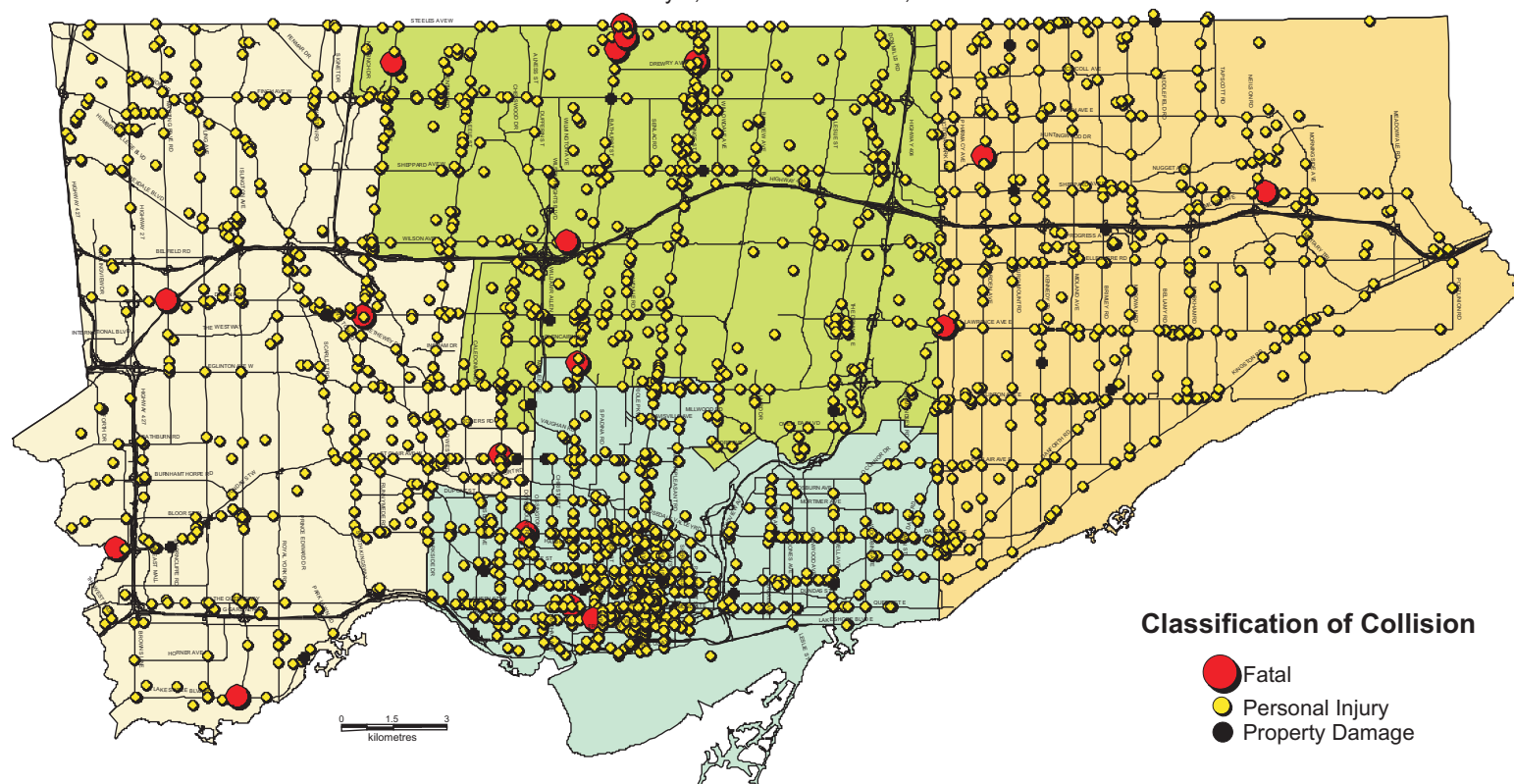
City	Population	Total Collisions	Collision Rate / 100,000 Population	Pedestrian Collisions	Pedestrian Collision Rate / 100,000 Population
Vancouver	642,843	19,566	3,044	532	83
Toronto	2,712,900	54,150	1,996	2,167	80
Montreal	1,978,066	33,756	1,707	1,435	73
Calgary	1,090,936	34,297	3,144	506	46
Hamilton	519,949	3,673	706	221	43
Edmonton	793,000	23,442	2,956	316	40
Ottawa	923,000	14,925	1,617	350	38
Winnipeg	691,800	13,048	1,886	241	35

* Most recent data available

Pedestrian Collisions - Collision Type

Collision Types	Pedestrian Collisions - 2011				Annual 5 Yr Avg (06-10)
	No Injury	Injured	Fatal	Total	
Vehicle turns left while ped crosses with ROW at inter.	10	520	3	533	465
Pedestrian hit at mid-block	13	311	3	327	323
Vehicle turns right while ped crosses with ROW at inter.	10	278	0	288	241
Pedestrian hit at parking lot	9	262	0	271	279
Vehicle is going straight thru intersection while ped crosses without ROW	11	159	3	173	229
Vehicle is going straight Thru intersection while ped crosses with ROW	7	116	1	124	134
Other, Unknown, or Undefined	3	116	2	121	95
Pedestrian hit on sidewalk or shoulder	3	84	1	88	101
Vehicle turns left while ped crosses without ROW at inter.	3	71	0	74	53
Pedestrian hit at private driveway	2	67	2	71	39
Vehicle is reversing and hits pedestrian	4	65	0	69	82
Pedestrian hit at pedestrian crossover (PXO)	2	42	0	44	50
Pedestrian involved in a collision with transit vehicle at mid-block	4	29	3	36	66
Vehicle hits the ped. walking, running out between parked vehicles - midblock	1	28	0	29	21
Vehicle turns right while ped crosses without ROW at inter.	1	26	0	27	25
Total	83	2,174	18	2,275	2,205

Collisions Involving Pedestrians, January 1, 2011 - December 31, 2011



Classification of Collision

- Fatal
- Personal Injury
- Property Damage