

This leaflet presents an analysis of persons injured in collisions to December 31, 2007 showing relevant facts and trends.

Injury History by Road User

Year	Pedestrians	Drivers	Passengers	Cyclists	Other/Unknown	Total
1998	2,186	12,947	7,163	1,170	230	23,696
1999	2,071	13,097	7,240	1,032	252	23,692
2000	2,373	13,269	7,797	1,088	242	24,769
2001	2,449	12,665	7,798	1,108	115	24,135
2002	2,393	12,870	8,180	1,104	100	24,647
2003	2,333	11,446	7,407	1,023	111	22,320
2004	2,090	9,623	5,603	1,015	143	18,474
2005	2,109	9,151	5,094	1,025	83	17,462
2006	2,231	9,171	4,999	950	83	17,434
2007	2,122	8,714	4,570	1,014	79	16,499

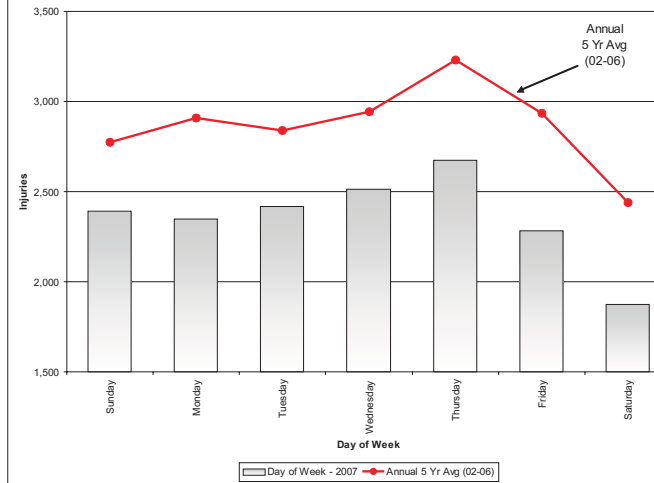
Injury Collision - Injury History

Year	Personal Injury Collisions	Injuries
1998	17,879	23,696
1999	16,701	23,692
2000	17,458	24,769
2001	16,726	24,135
2002	16,894	24,647
2003	15,384	22,320
2004	13,138	18,474
2005	12,540	17,462
2006	12,551	17,434
2007	12,156	16,499

Injuries - Road Classification: Jan. 1 to Dec. 31, 2007

Road Classification	Injuries
Major Arterial	10,583
Minor Arterial	2,368
Expressway	873
Collector	797
Local	766
Private Property	583
Blank	522
Laneway	7
Total	16,499

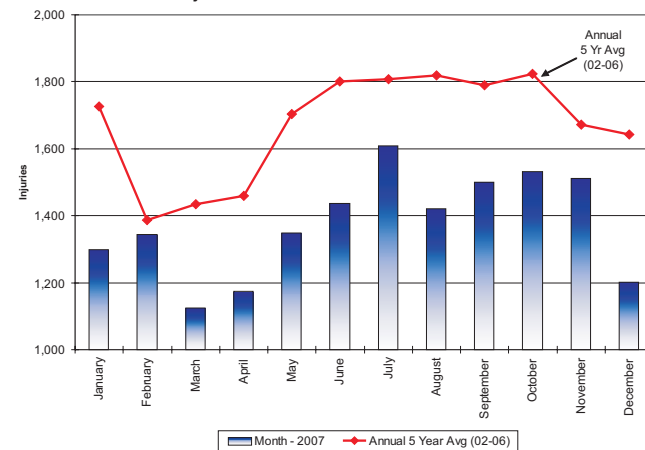
Injuries - Day of Week: Jan. 1 to Dec. 31, 2007



Injuries - Traffic Control: Jan. 1 to Dec. 31, 2007

Traffic Control Type	2007 - 12 Month					
	Pedestrians	Drivers	Passengers	Cyclists	Other/Unknown	Total
No Control	995	4,139	2,056	481	44	6,720
Traffic Signal	839	3,648	2,004	346	28	6,026
Stop Sign	194	769	428	171	5	1,373
Ped Crossover	54	57	36	10	0	103
Yield Sign	4	30	14	2	0	46
Traffic Controller	10	31	15	0	0	46
Blank	13	19	8	2	2	31
Police Control	7	8	4	2	0	14
Traffic Gate	1	7	2	0	0	9
School Bus	1	4	2	0	0	6
Other/Unknown	1	1	1	0	0	2
School Guard	3	1	0	0	0	1
Total	2,122	8,714	4,570	1,014	79	16,499

Injuries - Month: Jan. 1 to Dec. 31, 2007



Injuries - Impact Type, Jan. 1 to Dec. 31, 2007

Impact Type	Injuries
Rear-End	5,209
Turning Movement	3,419
Pedestrians Struck	2,211
Angle	2,173
Cyclist Struck	1,027
Single Motor Vehicle Other	812
Sideswipe	651
Approaching	468
Unknown	392
Single Motor Unattended Vehicle	137
Total	16,499

Injuries - Weather Conditions, Jan. 1 to Dec. 31, 2007

Weather	Injuries
Clear	14,109
Rain	1,468
Snow	657
Unknown/Other	172
Freezing Rain	45
Fog	33
Strong Wind	15
Total	16,499

The collision information presented in the leaflet was summarized from Motor Vehicle Collision Reports obtained from the Toronto Police Service.

For more information call (416)392-5210.

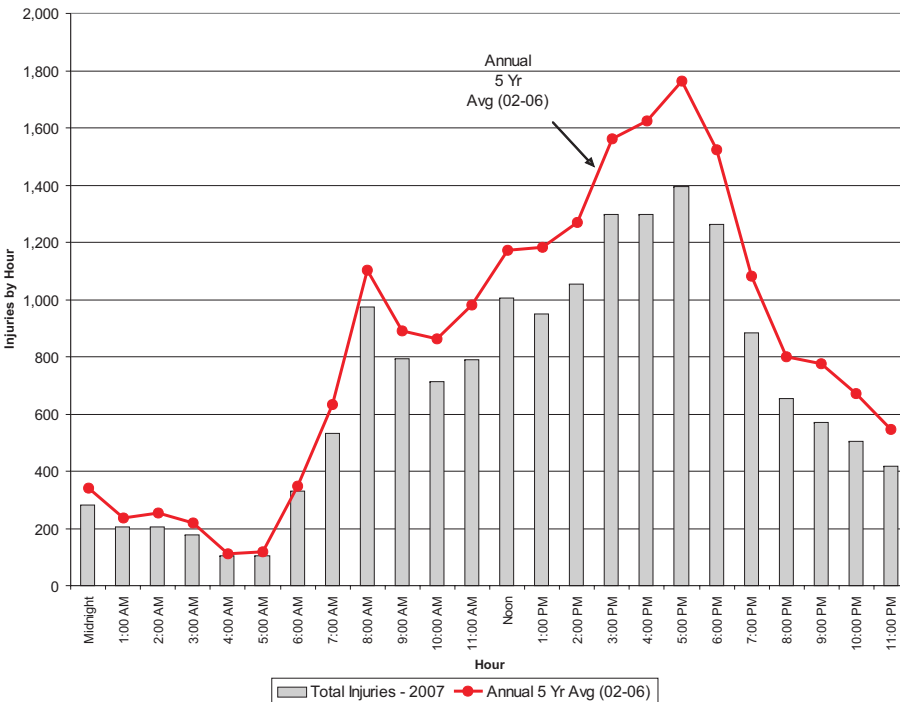
Injuries - Age Group, Jan. 1 to Dec. 31, 2007

Age Group	Injuries
0 - 4	137
5 - 14	551
15 - 19	833
20 - 24	1,677
25 - 34	3,106
35 - 44	3,003
45 - 54	2,579
55 - 64	1,573
65 +	1,287
Unknown	1,753
Total	16,499

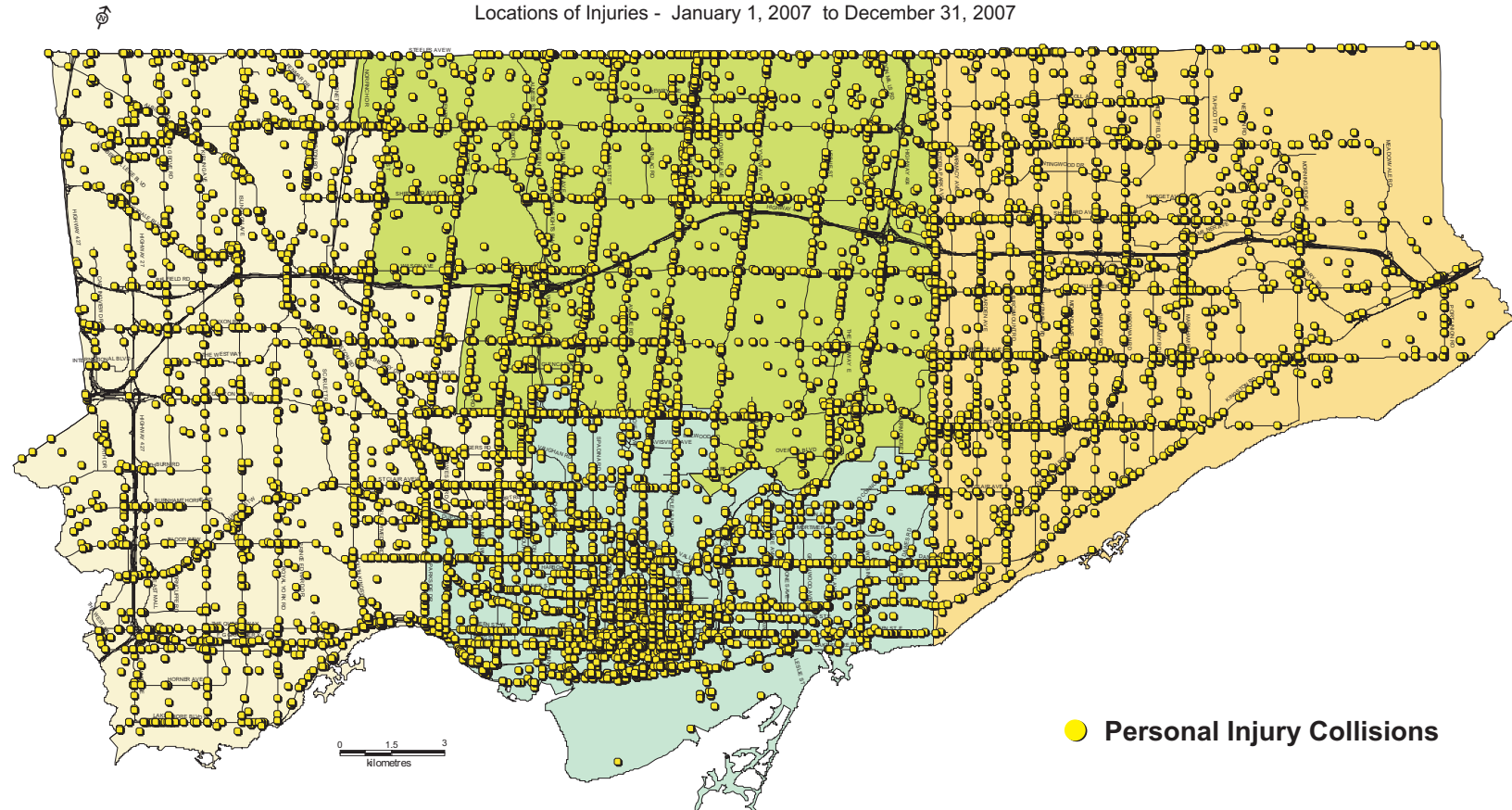
City	Population	Injuries as a Result of Motor Vehicles	Injury Rate / 100,000 Population
Toronto	2,607,637	16,499	633
Montreal	1,854,442	6,326	341
Calgary	1,019,942	3,601	353
Ottawa	870,700	3,620	416
Edmonton	741,028	8,221	1,109
Winnipeg	649,300	3,875	597
Vancouver	578,041	1,374	238
Hamilton	504,559	2,427	481

* Most recent data available.

Injuries - Time of Day, Jan. 1 to Dec. 31, 2007



Locations of Injuries - January 1, 2007 to December 31, 2007



This leaflet presents an analysis of fatal collisions to December 31, 2007 showing relevant facts and trends.

Fatal Collision: A death that has occurred within 366 days of the collision.

Fatality History By Road User

Year	Pedestrians	Drivers	Passengers	Cyclists	Total
1997	40	22	14	4	80
1998	39	31	12	6	88
1999	45	31	13	2	91
2000	26	22	15	3	66
2001	32	12	12	0	56
2002	50	32	13	2	97
2003	43	24	6	1	74
2004	28	23	13	2	66
2005	29	17	10	3	59
2006	30	15	9	3	57
2007	23	18	8	3	52

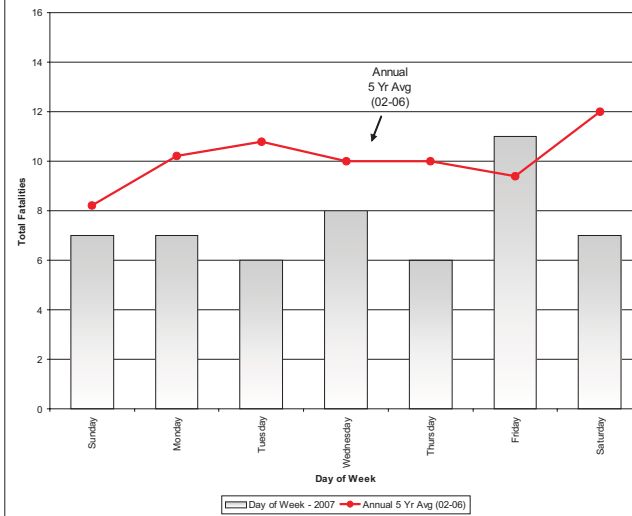
Fatal Collision - Fatality History

Year	Fatal Collisions	Fatalities
1997	79	80
1998	83	88
1999	85	91
2000	61	66
2001	52	56
2002	91	97
2003	72	74
2004	60	66
2005	52	59
2006	57	57
2007	48	52

Fatalities - Road Classification: Jan. 1 to Dec. 31, 2007

Road Classification	Fatalities
Major Arterial	33
Minor Arterial	6
Local	6
Expressway	5
Collector	2
Total	52

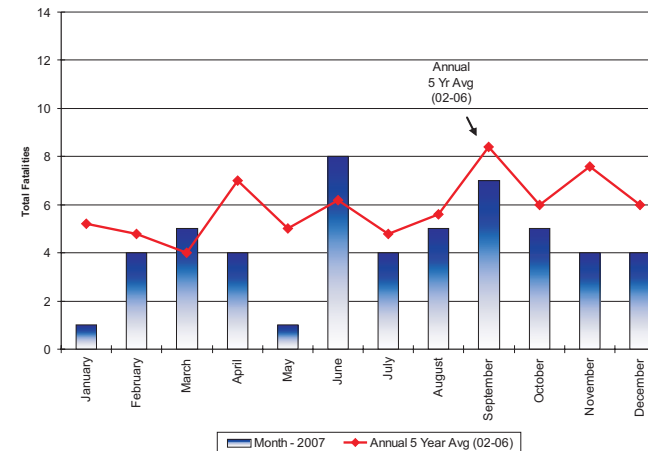
Fatalities - Day of Week: Jan. 1 to Dec. 31, 2007



Fatalities - Traffic Control: Jan. 1 to Dec. 31, 2007

Traffic Control Type	2007 - 12 Month					Total
	Pedestrians	Drivers	Passengers	Cyclists		
No Control	15	11	5	2		33
Traffic Signal	8	6	3	0		17
Ped Crossover	0	0	0	1		1
Stop Sign	0	1	0	0		1
Traffic Controller	0	0	0	0		0
Traffic Gate	0	0	0	0		0
School Bus	0	0	0	0		0
School Guard	0	0	0	0		0
Police Control	0	0	0	0		0
Yield Sign	0	0	0	0		0
Other	0	0	0	0		0
Control Unknown	0	0	0	0		0
Total	23	18	8	3		52

Fatalities - Month: Jan. 1 to Dec. 31, 2007



Fatalities - Alcohol Related, 1997-2007*



Year	Fatalities
1997	17
1998	11
1999	12
2000	13
2001	5
2002	11
2003	10
2004	8
2005	13
2006	3
2007	5

* Driver drinking

Fatalities - Weather Conditions, Jan. 1 to Dec. 31, 2007

Weather	Fatalities
Clear	44
Rain	5
Snow	2
Fog	1
Freezing Rain	0
Unknown	0
Total	52

The collision information presented in the leaflet was summarized from Motor Vehicle Collision Reports obtained from the Toronto Police Service.

For more information call (416)392-5210.

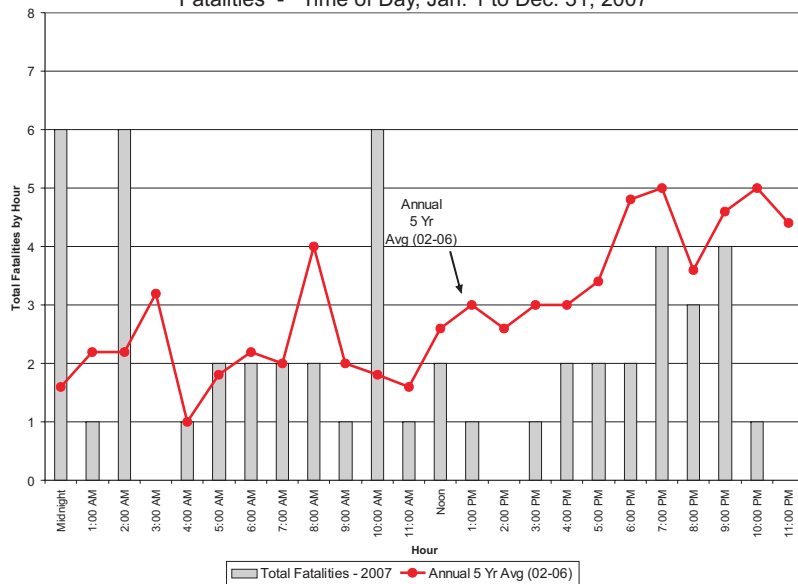
Fatalities - Impact Type, Jan. 1 to Dec. 31, 2007

Impact Type	Fatalities
Pedestrians Struck	23
Single Motor Vehicle	8
Approaching	6
Angle	6
Rear-End	3
Turning Movement	3
Cyclist Struck	3
Sideswipe	0
Unknown	0
Total	52

Fatalities - Age Group, Jan. 1 to Dec. 31, 2007

Age Group	Fatalities
0 - 4	1
5 - 14	1
15 - 19	7
20 - 24	4
25 - 34	6
35 - 44	7
45 - 54	6
55 - 64	7
65 +	13
Total	52

Fatalities - Time of Day, Jan. 1 to Dec. 31, 2007



Traffic Fatality Rate - Toronto compared to other Canadian Cities*

City	Population	Fatalities as a Result of Motor Vehicles	Fatality Rate / 100,000 Population
Toronto	2,607,637	52	1.99
Montreal	1,854,442	38	2.05
Calgary	1,019,942	46	4.51
Ottawa	870,700	25	2.87
Edmonton	741,028	25	3.37
Winnipeg	649,300	15	2.31
Vancouver	578,041	23	3.98
Hamilton	504,559	25	4.95

Locations of Fatalities - January 1, 2007 to December 31, 2007

